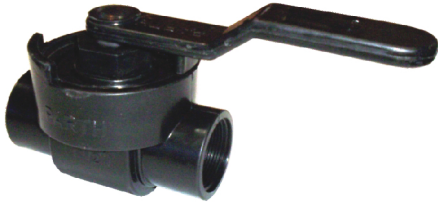


PP TOP ENTRY VALVE



TECHNICAL DATA :

CONSTRUCTION : Single piece floating ball, soft seated, Full Bore.

DESIGN AND MANUFACTURING STD. : As per Manufacturer Standard

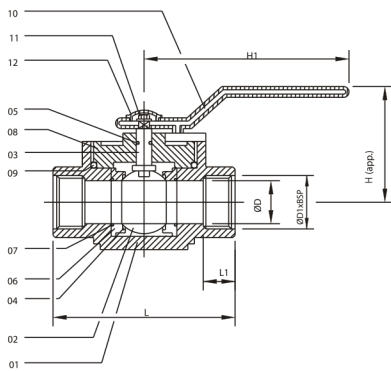
END CONNECTIONS : Screw end (BSP Thread)

AVAILABLE M.O.C. :

PP (POLYPROPYLENE)

ISOTACTIC PP

PVDF (POLYVINYLIDENE FLUORIDE)



NO.	DESCRIPTION	MATERIAL OPTION	QTY.
01	BODY	PP / ISOPP / PVDF	1
02	BALL	PP / ISOPP / PVDF	1
03	STEM / SPINDLE	M.S./S.S.PP/ISOPP/PVDF COATED	1
04	SEAT RING	PTFE	2
05	STEM O-RING	NEOPRENE	1
06	TEFLON RING	PTFE	2
07	O RING	PTFE	2
08	CAP	PP / ISOPP / PVDF	1
09	CAP O RING	NEOPRENE	1
10	HANDLE	M.S. PP COATED	1
11	HANDLE HEX. PIN	M.S. (EN8)/S.S. 316	1
12	HANDLE CAP	PP	1

ALL DIMENSIONS ARE IN MM (±2 MM)

SIZE	(±2 MM)							
	IN.	MM	Ø D	Ø D1	L	L1	H	H1
1 ½ "		40	38.0	1 ½ "	147	36	100	192
2 "		50	50.0	2 "	160	45	111	192