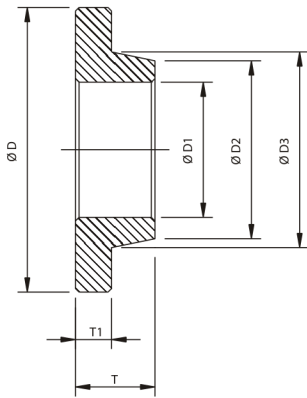


SHORT NECK PIPE END



AVAILABLE M.O.C. :

PP (POLYPROPYLENE)
HDPE (HIGH DENSITY POLYETHYLENE)
ISOTACTIC PP
PVDF (POLYVINYLIDENE FLUORIDE)



ALL DIMENSIONS ARE IN MM

(±2 MM)

SIZE	Ø D	Ø D1	Ø D2	Ø D3	T	T1
IN. MM.						
½ " 20	50.0	15.0	20.0	24.0	18.5	8.0
¾ " 25	58.0	20.0	25.0	29.0	18.5	9.5
1 " 32	65.0	23.0	32.0	34.0	21.0	10.0
1 ¼ " 40	73.0	31.0	40.0	44.0	21.5	10.0
1 ½ " 50	80.0	39.0	50.0	54.0	22.0	11.0
2 " 63	95.0	50.0	63.0	67.0	21.5	11.5
2½ " 75	105.0	57.5	75.0	80.0	25.0	11.5
3 " 90	122.5	68.0	90.0	95.5	27.0	14.0
4 " 110	151.5	84.5	108.0	113.0	30.0	14.0
5 " 125	182.0	92.0	123.0	130.0	32.0	16.5
5¼ " 140	187.0	114.0	140.0	145.0	26.5	15.5
6 " 160	217.0	125.0	160.0	166.0	35.0	20.0
7 " 180	242.0	139.0	180.0	185.0	34.0	18.0
8 " 200	239.0	155.5	200.0	204.5	43.0	24.0
9 " 225	275.0	177.5	225.0	227.0	47.0	28.0
10 " 250	300.0	196.0	250.0	244.0	42.0	25.5
11 " 280	324.0	218.0	279.0	285.0	41.5	26.0
12 " 315	380.0	243.5	315.0	320.0	50.0	30.0

AS PER IS : 8008 - 1976 (PART VI)

MAX. WORKING PRESSURE 10kg / cm²