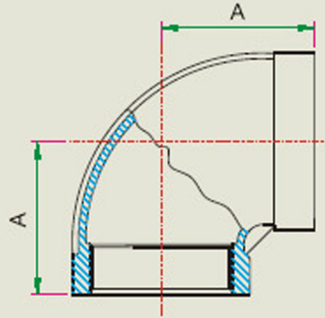
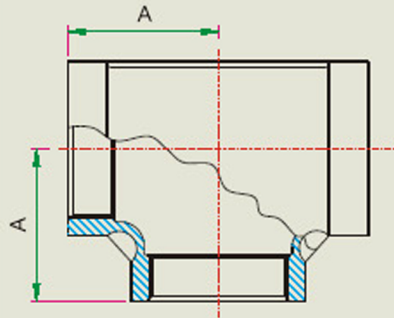


90° ELBOW



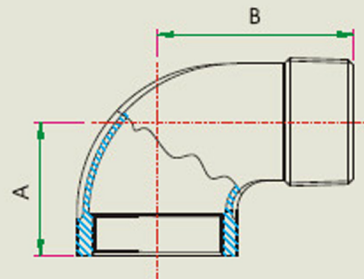
Size	A		Size	A	
	mm	inch		mm	inch
1/8"	17	0.67	1 1/4"	44	1.73
1/4"	19	0.75	1 1/2"	48	1.89
3/8"	23	0.91	2"	57	2.24
1/2"	28	1.10	2 1/2"	68	2.68
3/4"	32	1.26	3"	78	3.07
1"	38	1.50	4"	96	3.78

TEE



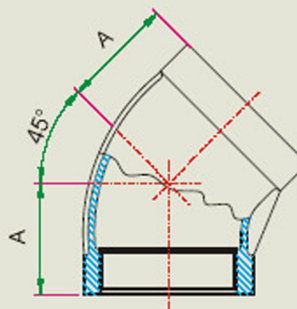
Size	A		Size	A	
	mm	inch		mm	inch
1/8"	17	0.67	1 1/4"	46	1.81
1/4"	19	0.75	1 1/2"	48	1.89
3/8"	23	0.91	2"	57	2.24
1/2"	29	1.14	2 1/2"	68	2.68
3/4"	33	1.30	3"	78	3.07
1"	38	1.50	4"	97	3.82

STREET ELBOW



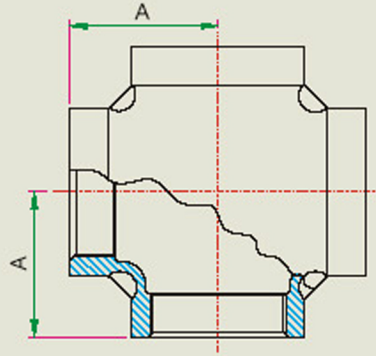
Size	A		B	
	mm	inch	mm	inch
1/8"	17	0.67	25	0.98
1/4"	19	0.75	30	1.18
3/8"	23	0.91	35	1.38
1/2"	29	1.14	40	1.58
3/4"	32	1.26	49	1.93
1"	38	1.50	54	2.13
1 1/4"	44	1.73	64	2.52
1 1/2"	50	1.97	70	2.76
2"	57	2.24	85	3.35
2 1/2"	69	2.72	95	3.74
3"	78	3.07	114	4.49
4"	97	3.82	134	5.28

45° ELBOW



Size	A		Size	A	
	mm	inch		mm	inch
1/8"	18	0.71	1 1/4"	30	1.18
1/4"	18	0.71	1 1/2"	36	1.42
3/8"	19	0.75	2"	43	1.69
1/2"	22	0.87	2 1/2"	49	1.93
3/4"	25	0.98	3"	55	2.17
1"	29	1.14	4"	65	2.56

CROSS



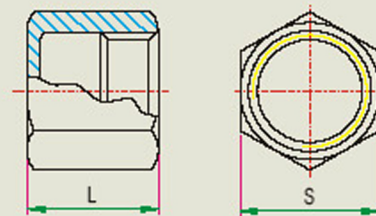
Size	A		Size	A	
	mm	inch		mm	inch
1/8"	19	0.75	1 1/4"	46	1.81
1/4"	19	0.75	1 1/2"	48	1.89
3/8"	23	0.91	2"	58	2.28
1/2"	29	1.14	2 1/2"	68	2.68
3/4"	33	1.30	3"	78	3.07
1"	38	1.50	4"	97	3.82

ROUND CAP



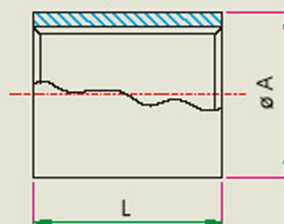
Size	L		Size	L	
	mm	inch		mm	inch
1/8"	14	0.55	1 1/4"	30	1.18
1/4"	15	0.59	1 1/2"	32	1.26
3/8"	17	0.67	2"	36	1.42
1/2"	20	0.79	2 1/2"	41	1.61
3/4"	24	0.94	3"	44	1.73
1"	28	1.10	4"	50	1.97

HEX. CAP



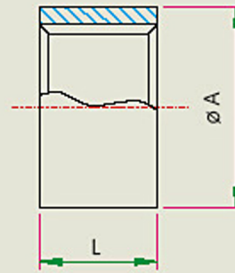
Size	L		S	
	mm	inch	mm	inch
1/8"	15	0.59	15	0.59
1/4"	17	0.67	18	0.71
3/8"	19.5	0.77	20	0.79
1/2"	22.5	0.89	28	1.10
3/4"	25	0.98	32	1.26
1"	30	1.18	41	1.61
1 1/4"	32	1.26	50	1.97
1 1/2"	34	1.34	57	2.24
2"	37	1.46	70	2.76
2 1/2"	43	1.69	85	3.35
3"	45	1.77	102	4.02
4"	52	2.05	128	5.04

COUPLING



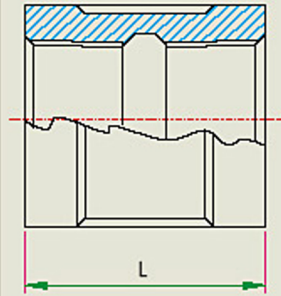
Size	L		A	
	mm	inch	mm	inch
1/8"	25.4	1.00	14	0.55
1/4"	25.4	1.00	19	0.75
3/8"	30	1.18	22	0.87
1/2"	38.1	1.50	26.9	1.06
3/4"	39.9	1.57	33.3	1.31
1"	45	1.77	40.4	1.59
1 1/4"	50.8	2.00	49	1.93
1 1/2"	54.1	2.13	55.5	2.18
2"	64	2.52	68.3	2.69
2 1/2"	76.5	3.01	82.6	3.25
3"	85	3.35	101.6	4.00
4"	97.5	3.84	127	5.00

HALF COUPLING



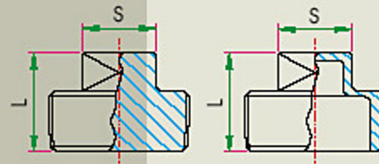
Size	L		A	
	mm	inch	mm	inch
1/8"	10	0.39	14	0.55
1/4"	12.5	0.49	19	0.75
3/8"	14	0.55	22	0.87
1/2"	17.5	0.69	26.5	1.04
3/4"	19	0.75	31.8	1.25
1"	21.5	0.85	40	1.57
1 1/4"	24	0.94	48.3	1.90
1 1/2"	25	0.98	54.5	2.15
2"	28	1.10	66.3	2.61
2 1/2"	35	1.38	85	3.35
3"	37.5	1.48	98	3.86
4"	40	1.57	125	4.92

SOCKET



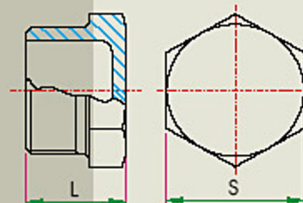
Size	L		Size	L	
	mm	inch		mm	inch
1/8"	25	0.98	1 1/4"	51	2.01
1/4"	30	1.18	1 1/2"	54	2.13
3/8"	30	1.18	2"	64	2.52
1/2"	38	1.50	2 1/2"	73	2.87
3/4"	40	1.57	3"	81	3.19
1"	46	1.81	4"	94	3.70

SQUARE PLUG



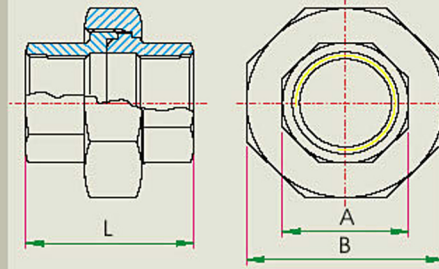
Size	L		S		Size	L		S	
	mm	inch	mm	inch		mm	inch	mm	inch
1/8"	15	0.59	7	0.28	1 1/4"	35	1.38	23	0.91
1/4"	18	0.71	9	0.35	1 1/2"	36	1.42	26	1.02
3/8"	21	0.83	12	0.47	2"	41	1.61	32	1.26
1/2"	25	0.98	14	0.55	2 1/2"	48	1.89	41	1.61
3/4"	28	1.10	17	0.67	3"	53	2.09	46	1.81
1"	31	1.22	19	0.75	4"	62	2.44	58	2.28

HEX. PLUG



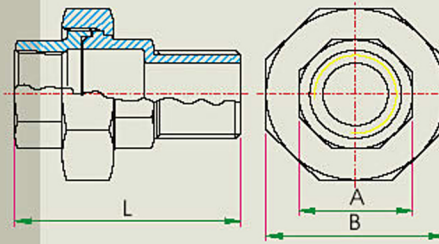
Size	L		S		Size	L		S	
	mm	inch	mm	inch		mm	inch	mm	inch
1/8"	16	0.63	15	0.59	1 1/4"	31	1.22	46	1.81
1/4"	18	0.71	17	0.67	1 1/2"	33	1.30	52	2.05
3/8"	21	0.83	19	0.75	2"	37	1.46	65	2.56
1/2"	23	0.91	26	1.02	2 1/2"	40	1.57	80	3.15
3/4"	25.5	1.00	31	1.22	3"	44	1.73	95	3.74
1"	28	1.10	38	1.50	4"	52	2.05	121	4.76

UNION (F/F)



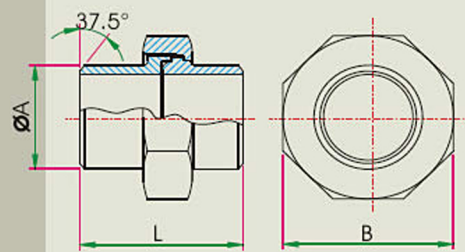
Size	L		A		B	
	mm	inch	mm	inch	mm	inch
1/8"	36.5	1.44	18	0.71	29	1.14
1/4"	36.5	1.44	18	0.71	29	1.14
3/8"	40.5	1.59	23	0.91	36	1.42
1/2"	45	1.77	27	1.06	41	1.61
3/4"	49.5	1.95	32	1.26	49	1.93
1"	53.5	2.11	41	1.61	58	2.28
1 1/4"	57.5	2.26	49	1.93	68	2.68
1 1/2"	61.5	2.42	56	2.20	76	2.99
2"	69	2.72	69	2.72	92	3.62
2 1/2"	83	3.27	86	3.39	113	4.45
3"	96	3.78	100	3.94	131	5.16
4"	104.5	4.11	127	5.00	160	6.30

UNION (M/F)



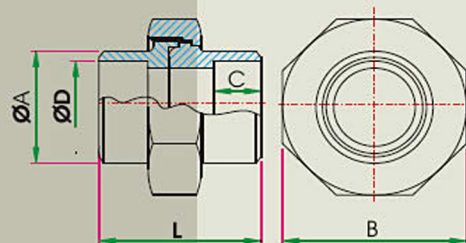
Size	L		A		B	
	mm	inch	mm	inch	mm	inch
1/8"	50.5	1.99	18	0.71	29	1.14
1/4"	50.5	1.99	18	0.71	29	1.14
3/8"	53.5	2.11	23	0.91	36	1.42
1/2"	59.5	2.34	27	1.06	41	1.61
3/4"	68	2.68	32	1.26	49	1.93
1"	74	2.91	41	1.61	58	2.28
1 1/4"	75.5	2.97	49	1.93	68	2.68
1 1/2"	91	3.58	56	2.20	76	2.99
2"	89.5	3.52	69	2.72	92	3.62
2 1/2"	115	4.53	86	3.39	113	4.45
3"	127.5	5.02	100	3.94	131	5.16
4"	155	6.10	127	5.00	160	6.30

BUTT WELD UNION



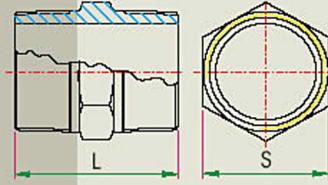
Size	L		A		B	
	mm	inch	mm	inch	mm	inch
1/8"	42	1.65	14	0.55	29	1.14
1/4"	42	1.65	19	0.75	29	1.14
3/8"	42	1.65	22	0.87	36	1.42
1/2"	42	1.65	26.9	1.06	41	1.61
3/4"	46	1.81	33.3	1.31	49	1.93
1"	50	1.97	40.4	1.59	58	2.28
1 1/4"	50	1.97	49	1.93	68	2.68
1 1/2"	62	2.44	55.5	2.18	76	2.99
2"	66	2.60	68.3	2.69	92	3.62
2 1/2"	83	3.27	82.6	3.25	113	4.45
3"	90	3.54	101.6	4.00	131	5.16
4"	110	4.33	127	5.00	160	6.30

SOCKET WELD UNION



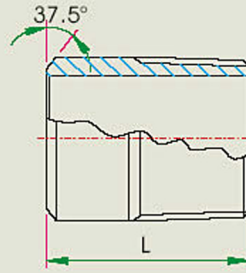
Size	L		A		B		C		D	
	mm	inch	mm	inch	mm	inch	mm	inch	mm	inch
1/8"	36.5	1.44	14	0.55	29	1.14	8.1	0.32	10.8	0.42
1/4"	36.5	1.44	19	0.75	29	1.14	8.1	0.32	14.1	0.56
3/8"	40.5	1.59	22	0.87	36	1.42	8.1	0.32	17.7	0.70
1/2"	45	1.77	26.9	1.06	41	1.61	9.4	0.37	21.7	0.85
3/4"	49.5	1.95	33.3	1.31	49	1.93	9.4	0.37	27.1	1.07
1"	53.5	2.11	40.4	1.59	58	2.28	11.2	0.44	33.9	1.33
1 1/4"	57.5	2.26	49	1.93	68	2.68	12.7	0.50	42.5	1.67
1 1/2"	61.5	2.42	55.5	2.18	76	2.99	12.7	0.50	48.6	1.91
2"	69	2.72	68.3	2.69	92	3.62	14.2	0.56	61.3	2.41
2 1/2"	83	3.27	82.6	3.25	113	4.45	14.2	0.56	73.9	2.91
3"	96	3.78	101.6	4.00	131	5.16	14.2	0.56	89.9	3.54
4"	104.5	4.11	127	5.00	160	6.30	17.5	0.69	115.3	4.54

HEX. NIPPLE



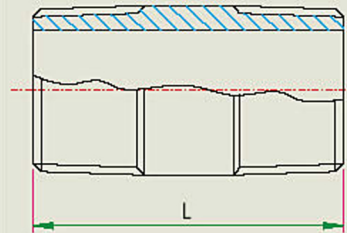
Size	L		S		Size	L		S	
	mm	inch	mm	inch		mm	inch	mm	inch
1/8"	32	1.26	13	0.52	1 1/4"	58	2.28	46	1.81
1/4"	34	1.34	15	0.59	1 1/2"	62	2.44	51	2.01
3/8"	36	1.42	20	0.79	2"	66	2.60	63	2.48
1/2"	42	1.65	23	0.91	2 1/2"	73	2.87	80	3.15
3/4"	47	1.85	29	1.14	3"	86	3.39	95	3.74
1"	52	2.05	36	1.42	4"	94	3.70	120	4.72

WELDING NIPPLE (Sch. 40 Pipe)



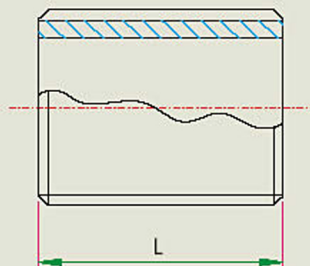
Size	L		Size	L	
	mm	inch		mm	inch
1/8"	20	0.79	1 1/4"	50	1.98
1/4"	30	1.18	1 1/2"	50	1.98
3/8"	30	1.18	2"	60	2.36
1/2"	35	1.38	2 1/2"	60	2.36
3/4"	40	1.57	3"	70	2.76
1"	40	1.57	4"	80	3.15

BARRELL NIPPLE (Sch. 40 Pipe)



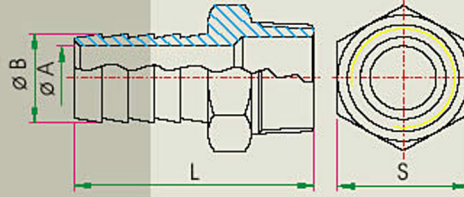
Size	L		Size	L	
	mm	inch		mm	inch
1/8"	30	1.18	1 1/4"	80	3.15
1/4"	30	1.18	1 1/2"	80	3.15
3/8"	40	1.57	2"	100	3.94
1/2"	60	2.36	2 1/2"	100	3.94
3/4"	60	2.36	3"	120	4.72
1"	60	2.36	4"	150	5.91

CLOSE NIPPLE (Sch. 40 Pipe)



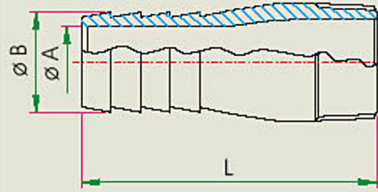
Size	L		Size	L	
	mm	inch		mm	inch
3/8"	22	0.87	1 1/2"	38	1.50
1/2"	25	0.98	2"	45	1.77
3/4"	30	1.18	2 1/2"	55	2.17
1"	35	1.38	3"	60	2.36
1 1/4"	38	1.50			

HOSE NIPPLE



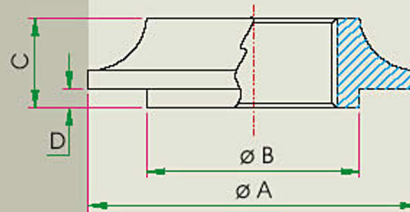
Size	L		S		A		B	
	mm	inch	mm	inch	mm	inch	mm	inch
1/4"	42	1.65	15	0.59	5	0.19	8.5	0.33
3/8"	48	1.88	20	0.79	7	0.27	11	0.43
1/2"	56	2.20	23	0.91	10	0.39	14	0.55
3/4"	67	2.63	29	1.14	15	0.59	20.5	0.80
1"	72	2.83	36	1.42	20	0.78	27	1.06
1 1/4"	74	2.91	46	1.81	26	1.02	33.5	1.31
1 1/2"	92	3.62	51	2.00	32	1.25	40	1.57
2"	100	3.93	63	2.48	44	1.73	52.5	2.06
2 1/2"	116	4.56	80	3.15	52	2.04	62	2.44
3"	131	5.15	95	3.74	67	2.63	78.4	3.08
4"	146	5.74	120	4.72	91	3.58	104	4.09

BARREL HOSE NIPPLE



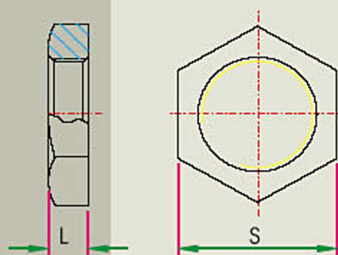
Size	L		A		B	
	mm	inch	mm	inch	mm	inch
1/4"	54	2.13	3.96	0.16	6.48	0.26
3/8"	57.2	2.25	5.94	0.23	9.56	0.38
1/2"	70	2.76	9.12	0.36	13.6	0.54
3/4"	80	3.15	15.6	0.61	19.6	0.77
1"	90.5	3.56	19.1	0.75	26.1	1.03
1 1/4"	94.3	3.71	25.4	1.00	33	1.30
1 1/2"	106.2	4.18	31.75	1.25	39	1.54
2"	119.4	4.70	44.45	1.75	51.6	2.03
2 1/2"	139.7	5.50	54.7	2.15	64.2	2.53
3"	152.4	6.00	67.5	2.66	77.4	3.05
4"	184.5	7.26	94.5	3.72	102.6	4.04

WELD SPUD



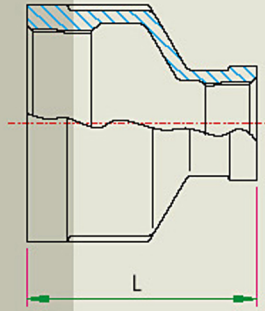
Size	A		B		C		D	
	mm	inch	mm	inch	mm	inch	mm	inch
1/4"	35	1.38	20	0.79	11	0.43	4	0.16
3/8"	39	1.54	23	0.91	12	0.47	4	0.16
1/2"	44	1.73	28	1.10	14	0.55	4	0.16
3/4"	49	1.93	33	1.30	15	0.59	4.5	0.18
1"	56	2.20	41	1.61	17	0.67	5	0.20
1 1/4"	65	2.56	49	1.93	19	0.75	5	0.20
1 1/2"	72	2.83	56	2.20	20	0.79	5	0.20
2"	84	3.31	68	2.68	21.5	0.85	5	0.20
2 1/2"	102	4.02	83	3.27	27	1.06	5	0.20
3"	115	4.53	98	3.86	28.5	1.12	5	0.20
4"	146	5.75	125	4.92	30	1.18	5	0.20

HEX. NUT



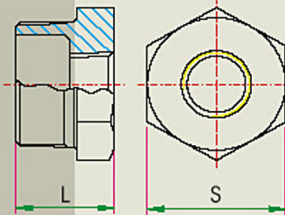
Size	L		S		Size	L		S	
	mm	inch	mm	inch		mm	inch	mm	inch
1/8"	8	0.31	17	0.67	1 1/4"	12	0.47	54	2.13
1/4"	8	0.31	21	0.83	1 1/2"	13	0.51	63	2.48
3/8"	9	0.35	26	1.02	2"	13	0.51	77	3.03
1/2"	9	0.35	32	1.26	2 1/2"	16.5	0.65	100	3.94
3/4"	10	0.39	38	1.50	3"	19	0.75	115	4.53
1"	11	0.43	46	1.81	4"	20	0.79	145	5.71

REDUCING SOCKET



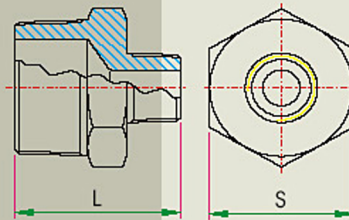
Size	L		Size	L		Size	L	
	mm	inch		mm	inch		mm	inch
1/4"X1/8"	25	0.98	1 1/2"X1"	54	2.13	2 1/2"X1 1/2"	75	2.95
3/8"X1/8"	28	1.10	1 1/2"X3/8"	59	2.32	2 1/2"X2"	75	2.95
3/8"X1/4"	28	1.10	1 1/2"X3/4"	59	2.32	3"X 1/2"	80	3.15
1/2"X1/8"	34	1.34	1 1/2"X1/2"	59	2.32	3"X3/4"	80	3.15
1/2"X1/4"	34	1.34	1 1/2"X3/4"	59	2.32	3" X 1"	80	3.15
1/2"X3/8"	34	1.34	1 1/2"X1"	59	2.32	3"X1 1/4"	80	3.15
3/4"X1/8"	38	1.50	1 1/2"X1 1/4"	59	2.32	3"X1 1/2"	80	3.15
3/4"X1/4"	38	1.50	2"X1/4"	67	2.64	3" X 2"	80	3.15
3/4"X3/8"	38	1.50	2"X3/8"	67	2.64	3"X2 1/2"	80	3.15
3/4"X1/2"	38	1.50	2"X1/2"	67	2.64	4"X1/2"	86	3.39
1"X 1/4"	42	1.65	2"X3/4"	67	2.64	4"X 3/4"	86	3.39
1"X 3/8"	42	1.65	2"X1"	67	2.64	4" X 1"	86	3.39
1"X 1/2"	42	1.65	2"X1 1/4"	67	2.64	4"X1 1/4"	86	3.39
1"X 3/4"	42	1.65	2"X1 1/2"	67	2.64	4"X1 1/2"	86	3.39
1 1/2"X1/4"	54	2.13	2 1/2"X1/2"	75	2.95	4" X 2"	86	3.39
1 1/2"X3/8"	54	2.13	2 1/2"X3/4"	75	2.95	4"X2 1/2"	86	3.39
1 1/2"X1/2"	54	2.13	2 1/2"X1"	75	2.95	4" X 3"	86	3.39
1 1/2"X3/4"	54	2.13	2 1/2"X1 1/4"	75	2.95			

HEX. BUSH



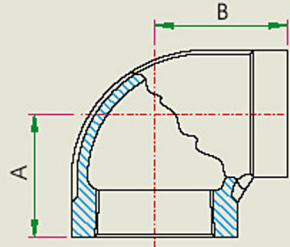
Size	L		S		Size	L		S	
	mm	inch	mm	inch		mm	inch	mm	inch
1/4"X1/8"	18	0.71	17	0.55	2"X1/4"	36	1.42	65	2.56
3/8"X1/8"	21	0.83	19	0.75	2"X3/8"	36	1.42	65	2.56
3/8"X1/4"	21	0.83	19	0.75	2"X1/2"	36	1.42	65	2.56
1/2"X1/8"	23	0.91	26	1.02	2"X3/4"	36	1.42	65	2.56
1/2"X1/4"	23	0.91	26	1.02	2"X1"	36	1.42	65	2.56
1/2"X3/8"	23	0.91	26	1.02	2"X1 1/4"	36	1.42	65	2.56
3/4"X1/8"	25	0.98	31	1.22	2"X1 1/2"	36	1.42	65	2.56
3/4"X1/4"	25	0.98	31	1.22	2 1/2"X1/2"	40	1.57	80	3.15
3/4"X3/8"	25	0.98	31	1.22	2 1/2"X3/4"	40	1.57	80	3.15
3/4"X1/2"	25	0.98	31	1.22	2 1/2"X1"	40	1.57	80	3.15
1"X 1/8"	28	1.10	38	1.50	2 1/2"X1 1/4"	40	1.57	80	3.15
1"X 1/4"	28	1.10	38	1.50	2 1/2"X1 1/2"	40	1.57	80	3.15
1"X 3/8"	28	1.10	38	1.50	2 1/2"X2"	40	1.57	80	3.15
1"X 1/2"	28	1.10	38	1.50	3"X 1/2"	45	1.77	95	3.74
1"X 3/4"	28	1.10	38	1.50	3"X3/4"	45	1.77	95	3.74
1 1/2"X1/2"	31	1.22	46	1.81	3" X 1"	45	1.77	95	3.74
1 1/2"X3/4"	31	1.22	46	1.81	3"X1 1/4"	45	1.77	95	3.74
1 1/2"X3/8"	31	1.22	46	1.81	3"X1 1/2"	45	1.77	95	3.74
1 1/2"X1/2"	31	1.22	46	1.81	3" X 2"	45	1.77	95	3.74
1 1/2"X3/4"	31	1.22	46	1.81	3"X2 1/2"	45	1.77	95	3.74
1 1/2"X1"	31	1.22	46	1.81	4"X1/2"	51	2.01	120	4.72
1 1/2"X1/8"	32	1.26	52	2.05	4"X 3/4"	51	2.01	120	4.72
1 1/2"X1/4"	32	1.26	52	2.05	4" X 1"	51	2.01	120	4.72
1 1/2"X3/8"	32	1.26	52	2.05	4"X1 1/4"	51	2.01	120	4.72
1 1/2"X1/2"	32	1.26	52	2.05	4"X1 1/2"	51	2.01	120	4.72
1 1/2"X3/4"	32	1.26	52	2.05	4" X 2"	51	2.01	120	4.72
1 1/2"X1"	32	1.26	52	2.05	4"X2 1/2"	51	2.01	120	4.72
1 1/2"X1 1/4"	32	1.26	52	2.05	4" X 3"	51	2.01	120	4.72
2"X1/8"	36	1.42	65	2.56					

REDUCING HEX NIPPLE



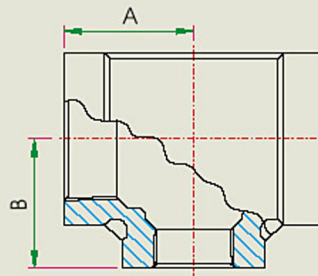
Size	L		S		Size	L		S	
	mm	inch	mm	inch		mm	inch	mm	inch
1/4"X1/8"	33	1.30	17	0.67	2"X1/2"	58	2.28	63	2.48
3/8"X1/8"	34	1.34	21	0.83	2"X3/4"	60	2.36	63	2.48
3/8"X1/4"	35	1.38	21	0.83	2"X1"	62	2.44	63	2.48
1/2"X1/8"	38	1.49	26	1.02	2"X1 1/4"	63	2.48	63	2.48
1/2"X1/4"	40	1.57	26	1.02	2"X1 1/2"	63	2.48	63	2.48
1/2"X3/8"	39	1.53	26	1.02	2 1/2"X1/2"	60	2.36	80	3.15
3/4"X1/8"	40	1.57	32	1.26	2 1/2"X3/4"	64	2.51	80	3.15
3/4"X1/4"	42	1.65	32	1.26	2 1/2"X1"	64	2.51	80	3.15
3/4"X3/8"	42	1.65	32	1.26	2 1/2"X1 1/4"	64	2.51	80	3.15
3/4"X1/2"	48	1.88	32	1.26	2 1/2"X1 1/2"	65	2.55	80	3.15
1"X 1/4"	45	1.77	38	1.50	2 1/2"X2"	69	2.71	80	3.15
1"X 3/8"	45	1.77	38	1.50	3"X 1/2"	65	2.55	95	3.74
1"X 1/2"	48	1.88	38	1.50	3"X3/4"	65	2.55	95	3.74
1"X 3/4"	50	1.96	38	1.50	3" X 1"	68	2.67	95	3.74
1 1/4"X1/4"	47	1.85	46	1.81	3"X1 1/4"	71	2.79	95	3.74
1 1/2"X3/8"	49	1.92	46	1.81	3"X1 1/2"	72	2.83	95	3.74
1 1/2"X1/2"	50	1.96	46	1.81	3" X 2"	74	2.91	95	3.74
1 1/2"X3/4"	52	2.04	46	1.81	3"X2 1/2"	77	3.03	95	3.74
1 1/2"X1"	56	2.20	46	1.81	4"X1/2"	71	2.79	120	4.72
1 1/2"X1/4"	48	1.88	51	2.01	4"X 3/4"	71	2.79	120	4.72
1 1/2"X3/8"	49	1.92	51	2.01	4" X 1"	75	2.95	120	4.72
1 1/2"X1/2"	52	2.04	51	2.01	4"X1 1/4"	78	3.07	120	4.72
1 1/2"X3/4"	54	2.12	51	2.01	4"X1 1/2"	78	3.07	120	4.72
1 1/2"X1"	57	2.24	51	2.01	4" X 2"	80	3.14	120	4.72
1 1/2"X1 1/4"	61	2.40	51	2.01	4"X2 1/2"	82	3.22	120	4.72
2"X1/4"	53	2.08	63	2.48	4" X 3"	86	3.38	120	4.72
2"X3/8"	58	2.28	63	2.48					

REDUCING ELBOW



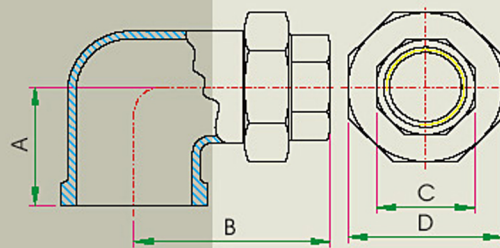
Size	A		B	
	mm	inch	mm	inch
3/8"X1/8"	20.5	0.81	21.6	0.85
3/8"X1/4"	22.4	0.88	22.9	0.90
1/2"X1/4"	26	1.02	25	0.98
1/2"X3/8"	26	1.02	25	0.98
3/4"X3/8"	29	1.14	29	1.14
3/4"X1/2"	29	1.14	29	1.14
1"X 1/2"	34	1.34	34	1.34
1"X 3/4"	34	1.34	34	1.34
1 1/4"X3/4"	36.8	1.45	41.2	1.62
1 1/4"X1"	40.1	1.58	42.4	1.67
1 1/2"X1"	41.9	1.65	45.7	1.80
1 1/2"X1 1/4"	46.2	1.82	47.8	1.88
2"X1 1/4"	48.3	1.90	53.3	2.10
2"X1 1/2"	51.3	2.02	54.9	2.16

REDUCING TEE



Size	A		B	
	mm	inch	mm	inch
3/8"X3/8"X1/8"	20.6	0.81	21.6	0.85
3/8"X3/8"X1/4"	22.4	0.88	22.9	0.90
1/2"X1/2"X1/4"	25	0.98	25	0.98
1/2"X1/2"X3/8"	25	0.98	25	0.98
3/4"X3/4"X3/8"	28	1.10	29	1.14
3/4"X3/4"X1/2"	28	1.10	29	1.14
1"X 1"X 1/2"	33	1.30	34	1.34
1"X 1"X 3/4"	33	1.30	34	1.34
1 1/4"X 1 1/4"X 3/4"	36.8	1.45	41.2	1.62
1 1/4"X 1 1/4"X 1"	40.1	1.58	42.4	1.67
1 1/2"X 1 1/2"X 1"	41.9	1.65	45.7	1.80
1 1/2"X 1 1/2"X 1 1/4"	46.2	1.82	47.8	1.88
2"X 2"X 1 1/4"	48.3	1.90	53.3	1.90
2"X 2"X 1 1/2"	51.3	2.02	54.9	2.16

ELBOW UNION (F/F)



Size	A		B		C		D	
	mm	inch	mm	inch	mm	inch	mm	inch
1/2"	28	1.10	52	2.05	27	1.06	41	1.61
3/4"	32	1.26	54	2.13	32	1.26	49	1.93
1"	40	1.57	66	2.60	41	1.61	58	2.28